

WAHL CLIPPER CORPORATION  
World Headquarters  
P.O. Box 578, Sterling, IL 61081

Wahl (UK) Ltd.  
Herne Bay Trade Park  
Sea Street Herne Bay, Kent  
CT6 8JZ England


Unity Agencies Pty Ltd  
PO Box 456  
Acacia Ridge QLD 4110  
Australia

Wahl India Grooming Products  
Pvt Ltd  
201, 2nd Floor X Cube, Opp. Fun  
Republic  
New Link Road, Andheri (West)  
Mumbai – 400 053 Maharashtra,  
India

Wahl Clipper (PTY) Ltd.  
Suite L9 & L10  
Hingham Field Oce Park  
79 Boeing Road East  
Bedfordview, Gauteng 2007  
South Africa

Wahl International Consumer  
Group B.V.  
Engelenburgstraat 36  
7391 AM Twello, The Netherlands

Wahl International Consumer  
Group B.V (Dubai Branch)  
Dubai Silicon Oasis  
P.O. Box – 341023  
Dubai  
United Arab Emirates

WAHL Russia  
(ООО «Уолл Рус»)   
Российская Федерация  
129164, Москва,  
Ракетный бульвар, 16  
info@wahlrus.ru

Wahl Argentina  
Av. Alvarez Jonte 5655  
Buenos Aires (C1407GPK)  
Argentina

Wahl Clipper Brasil  
Rodovia Geraldo Scavone, 2300  
UC 45. Pedregulho.  
Jacarei - SP. CEP: 1230549

Wahl GmbH  
Roggenbachweg 9  
78089 Unterkirnach,  
Germany

WAHL Spain  
Fernando Giner de los Rios 12  
46910 Sedavi  
Valencia, Spain

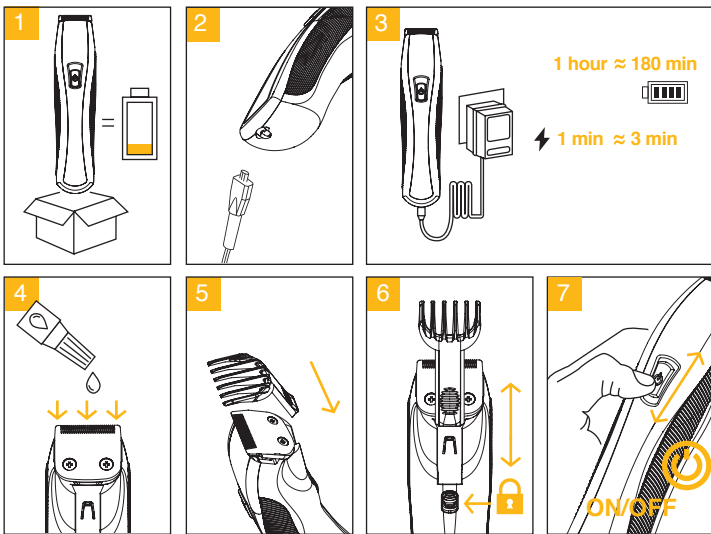
© 2016 Printed in Hungary  
Wahl® is a registered trademark  
of Wahl Clipper Corporation

[www.wahl-consumer.com](http://www.wahl-consumer.com)

## 1541 WAHL Beard and Stubble Trimmer

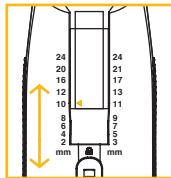
MODEL/TYPE 1541

Part No.1541.1001

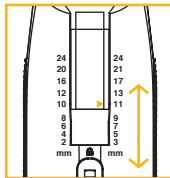


→ 0,5 mm

+



2; 4; 6; 8; 10; 12; 16; 20; 24 mm



3; 5; 7; 9; 11; 13; 17; 21; 24 mm

