

WAHL[®]
HOME PRODUCTS



WAHL CLIPPER CORPORATION
World Headquarters
P.O. Box 578, Sterling, IL 61081

Wahl (UK) Ltd.
Herne Bay Trade Park
Sea Street Herne Bay, Kent
CT6 8JZ England

Unity Agencies Pty Ltd
PO Box 456
Acacia Ridge QLD 4110
Australia

Wahl India Grooming Products
Pvt Ltd
201, 2nd Floor X Cube, Opp. Fun
Republic
New Link Road, Andheri (West)
Mumbai – 400 053 Maharashtra,
India

Wahl Clipper (PTY) Ltd.
Suite L9 & L10
Hingham Field Oce Park
79 Boeing Road East
Bedfordview, Gauteng 2007
South Africa

Wahl International Consumer
Group B.V.
Engelenburgstraat 36
7391 AM Twello, The Netherlands

Wahl International Consumer
Group B.V (Dubai Branch)
Dubai Silicon Oasis
P.O. Box – 341023
Dubai
United Arab Emirates

WAHL Russia
(ООО «Уолл Рус») **EAC**
Российская Федерация
129164, Москва,
Ракетный бульвар, 16
info@wahlrus.ru

Wahl Argentina
Av. Alvarez Jonte 5655
Buenos Aires (C1407GPK)
Argentina

Wahl Clipper Brasil
Rodovia Geraldo Scavone, 2300
UC 45. Pedregulho.
Jacarei - SP. CEP: 1230549

Wahl GmbH
Roggenbachweg 9
78089 Unterkirnach,
Germany

WAHL Spain
Fernando Giner de los Rios 12
46910 Sedavi
Valencia, Spain

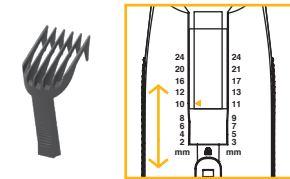
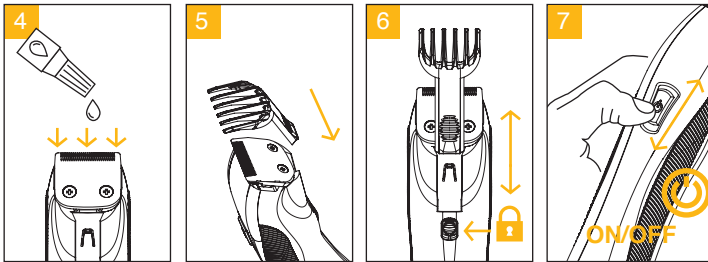
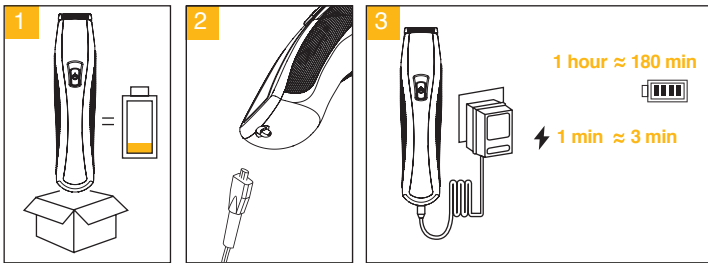
© 2016 Printed in Hungary
Wahl® is a registered trademark
of Wahl Clipper Corporation

www.wahl-consumer.com

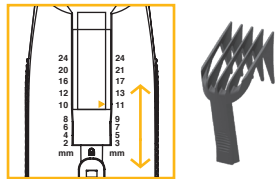
1541 WAHL Beard and Stubble Trimmer

MODEL/TYPE 1541

Part No.1541.1001



2; 4; 6; 8; 10; 12; 16; 20; 24 mm



3; 5; 7; 9; 11; 13; 17; 21; 24 mm

